

A young couple is smiling and holding colorful cocktails outdoors. The woman on the left is wearing a red dress and sunglasses, holding a green drink with a lemon slice and a green straw. The man on the right is wearing a light blue shirt and sunglasses, holding a red drink with a kiwi slice and a pink straw. They are surrounded by lush green foliage. The image has a collage-like feel with torn paper edges and circular cutouts.

Where life  
is easy

**PUMICESTONE**  
*Pocket*



# About

## Pumicestone Pocket

Live the easy life at Pumicestone Pocket located in Caboolture, North Brisbane.

With low maintenance living in mind, Pumicestone Pocket is a place where you can spend more time out and about enjoying life. Whether it's a day on the water at Pumicestone Passage, a hike through the hinterland or simply enjoying a night out with friends at your local, Pumicestone Pocket is where life is easy.

All you need is close by with a range of shops, schools and transport options within the surrounding suburb of Caboolture.

The community will be home to only 60 residential homesites, making this a place where neighbours can become lifelong friends. Pumicestone Pocket is low maintenance living at its best and a place where you can truly enjoy the easy life.

Build your dream home at Pumicestone Pocket with a range of lot sizes available to suit the home design to match your lifestyle.











## Location

Pumicestone Pocket gives you the freedom to lock up and leave so you can spend more time enjoying an easy lifestyle.

Swap mowing the lawn for hikes in the hinterland, spend your day out on the water in Pumicestone Passage instead of doing the house chores, and rather than spending the weekend cooking up a storm in the kitchen, leave the entertaining of your friends and family to one of the many local clubs or restaurants (and you won't have to do the dishes either!).

Shops, restaurants, primary schools, secondary schools and medical services, are easily accessible and only minutes away.

There's also a train station, bus interchange and easy access to major transport connections to Brisbane and the Sunshine Coast.

Bribie Island and Redcliffe are approximately 30 minutes drive away making it easy to escape to the coast.









Creating real  
neighbourhoods

CFMG Residential Communities bring quality residential neighbourhoods to life.

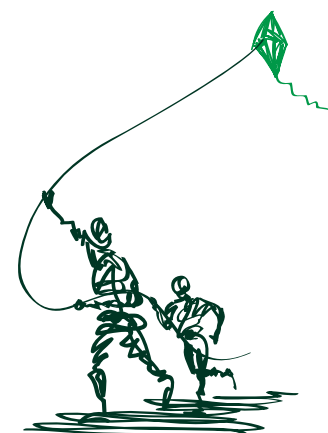
We bring aspirational addresses to emerging suburbs and communities across Australia. Our ability to develop with focus, agility and experience means our residents benefit from well considered and carefully constructed communities.

The key to CFMG Residential Communities success is the ability to identify residential trends and potential for growth. We deliver quality residential communities in growth corridors with close proximity to lifestyle amenities, employment hubs and educational facilities.

By adhering to these criteria, we are able to ensure our communities are not just a wonderful place to live but a great place to invest in your future.

CFMG Residential Communities are excited to bring Pumicestone Pocket to life.

[https://www.cfmcapital.com.au/  
residential-communities](https://www.cfmcapital.com.au/residential-communities)





# **PUMICESTONE** *Pocket*

*Phone*  
1800 592 221

*Email*  
[sales@pumicestonepocket.com.au](mailto:sales@pumicestonepocket.com.au)

*Website*  
[pumicestonepocket.com.au](http://pumicestonepocket.com.au)

*Address*  
15 Ibis Court, Caboolture QLD 4510

Proudly developed by



**CFMG**  
Residential  
Communities