

HOUSE and LAND *Package*



LOT 14 FARRIERS ESTATE,
BURPENGARY

\$693,500

CALI 195
RETREAT FACADE

HOME | 195m²

LAND | 363m²

4 BEDROOMS 2 BATHROOMS
2 LIVING 2 CAR

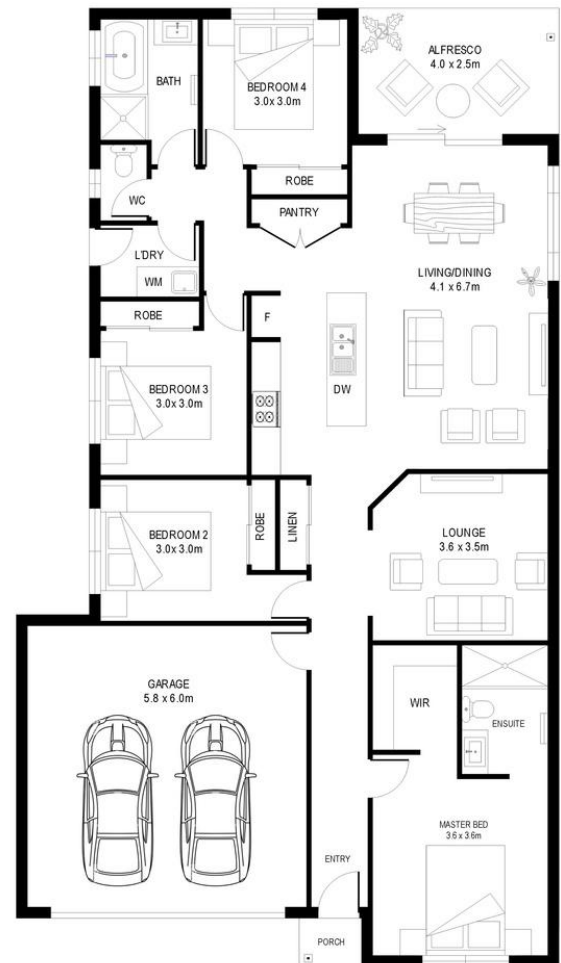
Inclusions

EXTERNAL INCLUSIONS

- Render to Facade and Rear
- Texture Finished Render to Sides
- Colorbond Roof
- Aluminium Sliding Windows + Doors
- Choice between 3 Premium 1200mm Entry Doors
- Premium Tiles to Porch and Alfresco
- H Class
- Premium Rinnai B20 Gas Hot Water System

INTERNAL INCLUSIONS

- Choice between Hybrid Flooring or Tiles to main areas
- 2590mm High Ceilings throughout
- LED Downlights
- White Timber Blade Ceiling Fans
- Daikin Air Conditioning
- Clipsal Iconic Electrical Range
- Premium Carpet to all Bedrooms and Media Rooms
- Mirror Sliding Wardrobe Doors
- Choice of Chrome Fixtures
- Round or Vessel Basin
- Soft Close Ceramic Toilet
- Free Standing Bath
- Smart Tile Floor Waste
- 900mm Westinghouse Appliances
- Lithostone 20mm Stone Benchtops
- Poytec Soft Close Cabinetry
- Tiled Splashback
- Shower Niches
- Semi Frameless Shower Screens



Contact Us

Laura Hansen

Ph: 0422 335 228

E: sales@martincorphomes.com.au

www.martincorphomes.com.au